



## **Model:UT-6804MT-GW**

### **4 RS-485/422 MODBUS GATEWAY)**

\_\_\_\_\_



		/	/		
	A0		2023-03-15		
“ ” “ ”					





WWW



	IP30
	-40~85°C -40~85°C 5% ~95%
L×W×H	161mm×91mm×37mm
	350g

5.

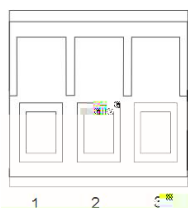
	linux
	ARP IP ICMP UDP TCP HTTP DHCP MODBUS
	Web browser
	ModbusRTU Master/Slave, ModbusTCP Master/Slave
	300-921600bps
	5 6 7 8
	1 2
	None Odd Even

6.

EMC	EN 55032/24
EMI	CISPR 32 FCC Part 15B Class A
EMS	IEC61000-4-2 ESD 4kV 8kV IEC61000-4-3 RS 80MHz-1GHz 3V/m IEC61000-4-4 EFT 1kV 0.5kV IEC61000-4-5 Surge 1KV 2KV 1.2/50 us 1KV 2KV 10/700 us RS-232/485/422 0.5KV 1KV 10/700 us IEC61000-4-6 CS 150KHz-80MHz 3V/m

7.

1



<b>5.08</b>	
1	V+
2	PGND
3	V-



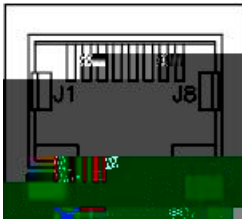
2



' ", %	FG (, )	FG (&&	
%	H#FŽ	HLŽ	#
&	H#F!	HL!	#
'		FLŽ	
(		FL!	

3 RJ45

100Base-T



link ACT

TXw w RXw w -

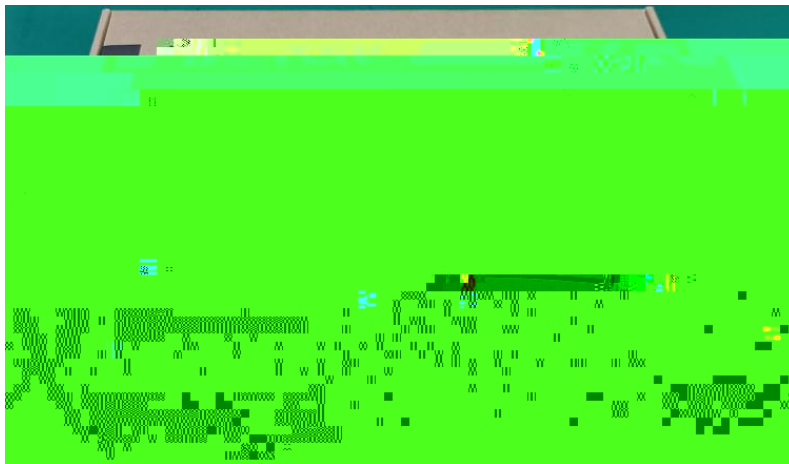
8.

UT-6804MT-GW





11.



12.

UT-6804MT-GW	1PC
	1PC
	1PC
	2PCS